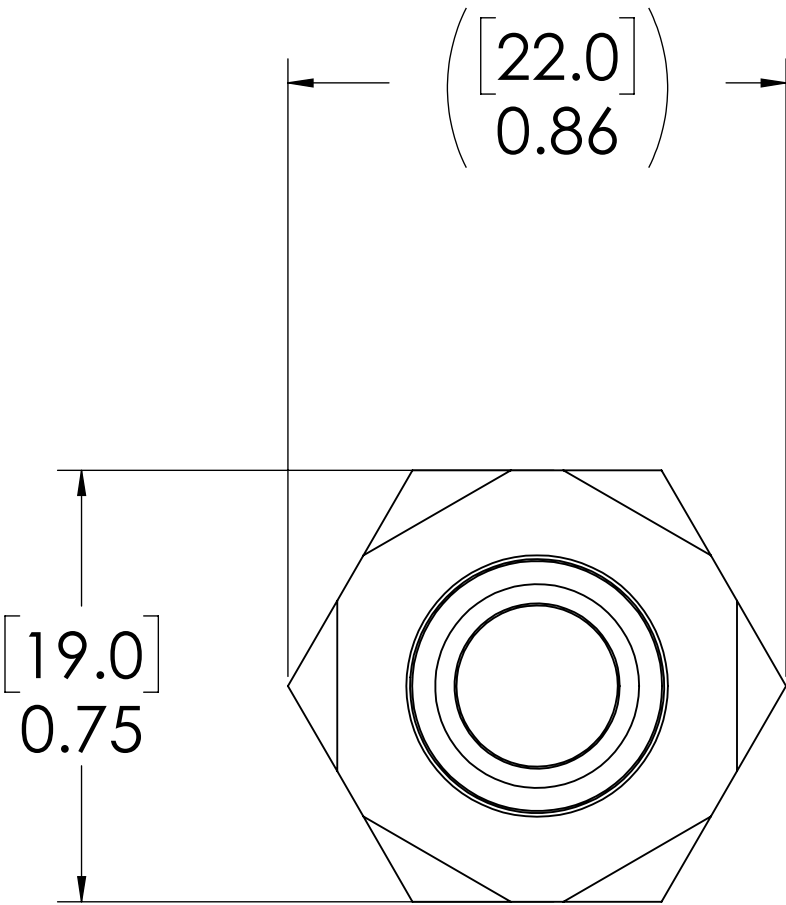
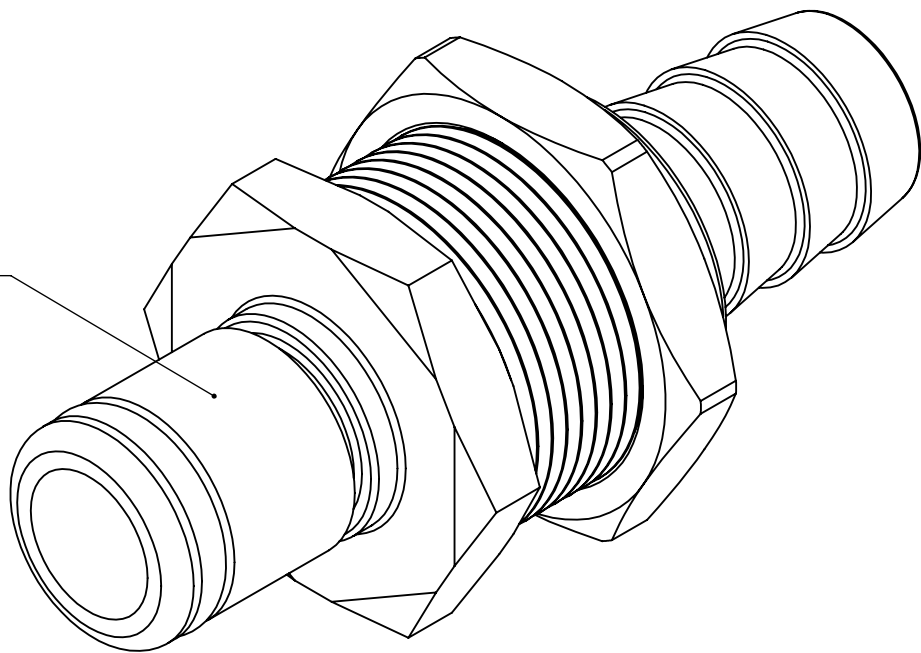
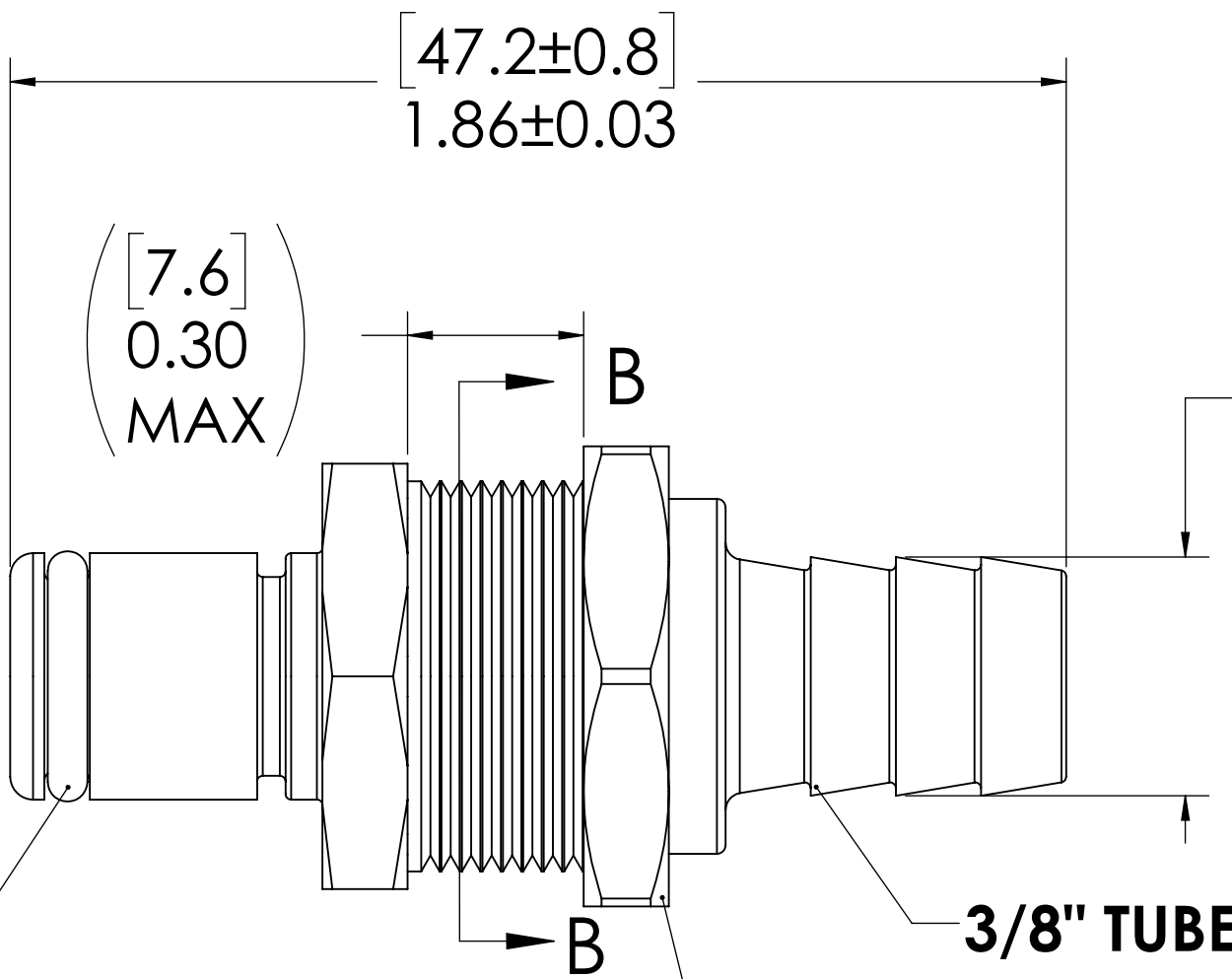


REVISIONS						
SHEET	ZONE	REV.	ECO	DESCRIPTION	DATE	APPROVED
1	ALL	A	50253	UPDATE DWG TO CURRENT FORMAT & STANDARDS	6/4/2018	HRC

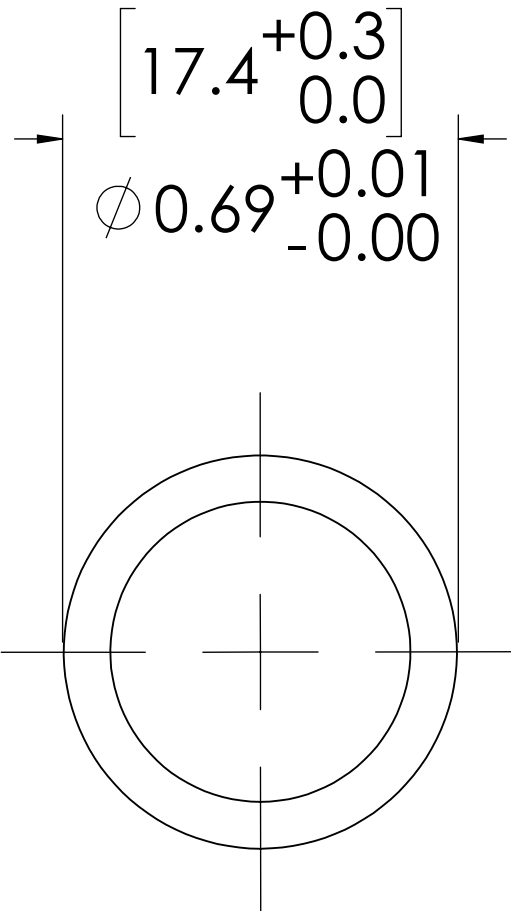
PLUG
(ACETAL)



O-RING
(BUNA-N)



PANEL NUT
(BRASS NICKEL PLATED)
(PACKAGED SEPERATELY)



PANEL OPENING
SECTION B-B

NOTES:

- MATERIAL: ACETAL
- COLOR: NATURAL WHITE
- O-RING MATERIAL: BUNA-N
- O-RINGS LUBRICATED WITH FOOD GRADE SILICONE OIL, 350 CST.

FOR REFERENCE ONLY

UNLESS OTHERWISE SPECIFIED:				LINKTECH		
DIMENSIONS ARE IN INCHES TOLERANCES: FRACTIONAL ± 1/32 ANGULAR, MACH ± 0.5 ONE PLACE DECIMAL ± 0.1 TWO PLACE DECIMAL ± 0.01 THREE PLACE DECIMAL ± 0.005 TWO PLACE DUAL (mm) [± 0.12]	DRAWN	LDM	12/15/17	PART NO: 40AC-PB3-06	DESCRIPTION: LinkTech 40AC Series Panel Mt. Male, Non-valved, 3/8" HB, Natural Acetal	REV A
	CHECKED	HRC	6/4/2018			
	ENG APPR.	HRC	6/4/2018			
	MFG APPR.	BDB	6/4/2018			
PROPRIETARY AND CONFIDENTIAL	Q.A.	JJB	6/4/2018	SCALE: NTS	DWG. NO. 40AC400223	SHEET 1 OF 1
THE INFORMATION CONTAINED IN THIS DRAWING IS THE SOLE PROPERTY OF LINKTECH LLC. ANY REPRODUCTION OR DISCLOSURE IN PART OR AS A WHOLE WITHOUT THE WRITTEN PERMISSION OF LINKTECH LLC IS STRICTLY PROHIBITED.			COMMENTS:			